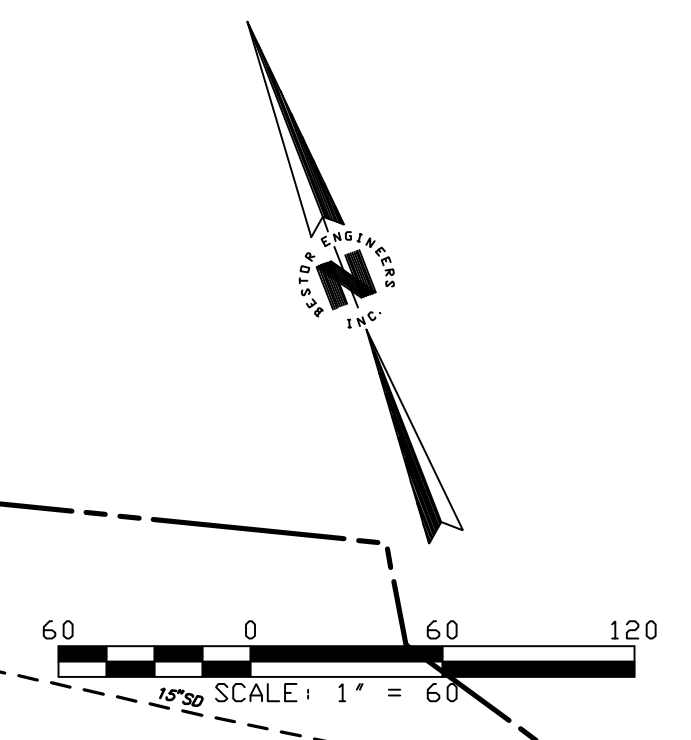
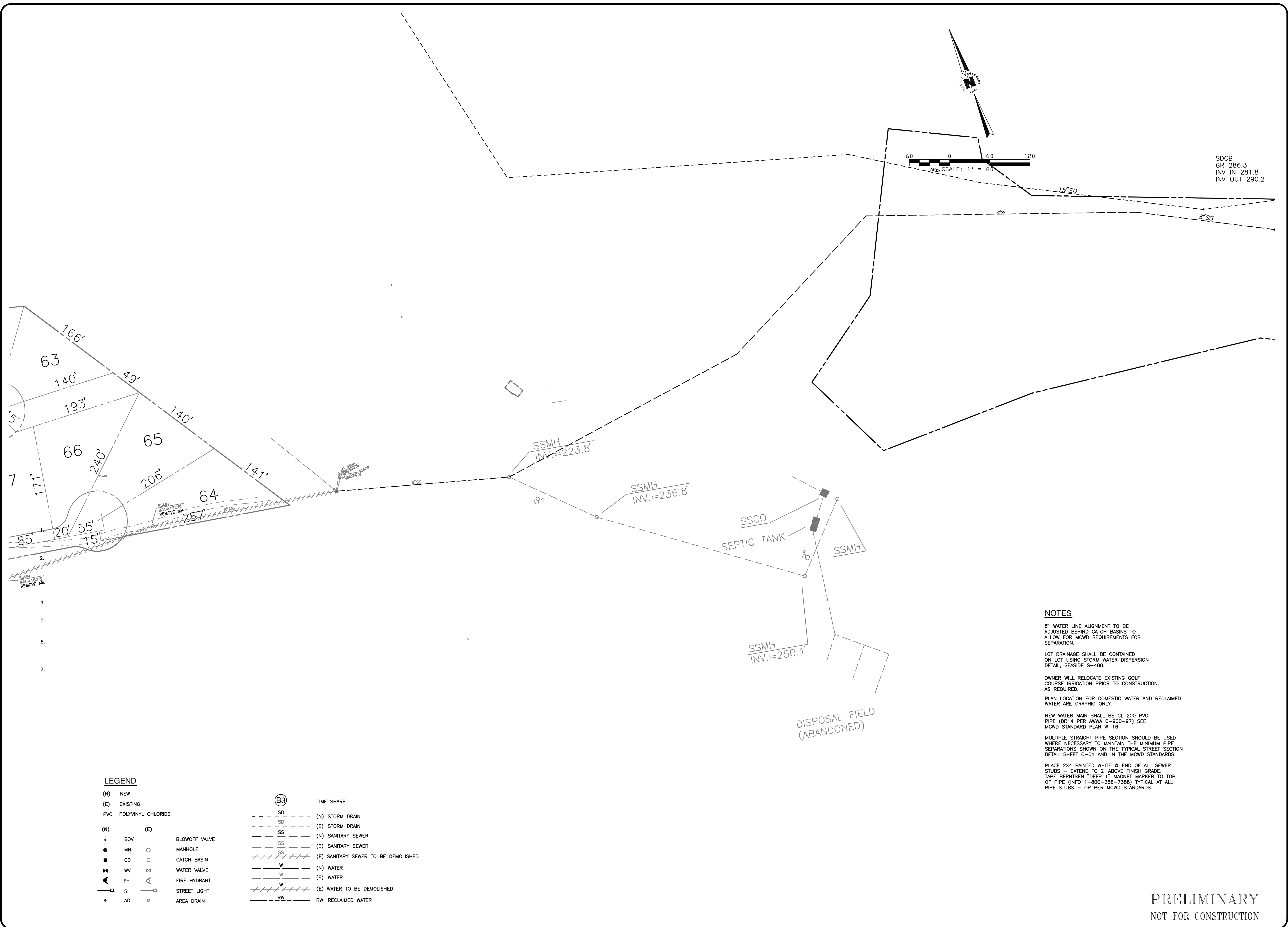
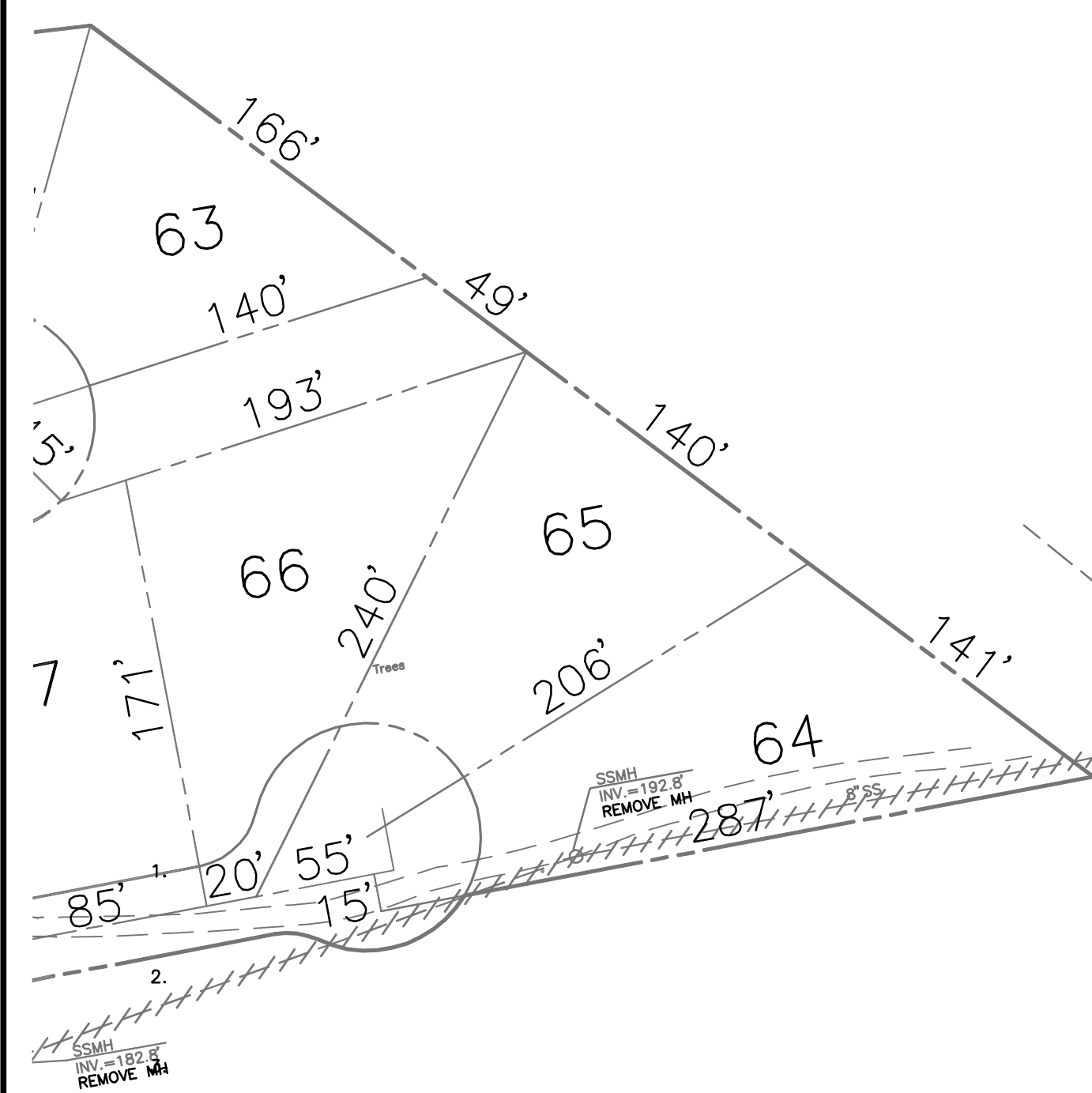


L:\5991\599100\Draws\Master Utilities\Plansheets\Exhibits\EXHIBIT C.DWG - words - OCT 04, 2017 - 13:45:00
 THE USE OF THESE PLANS AND SPECIFICATIONS SHALL BE RESTRICTED TO THE ORIGINAL SITE FOR WHICH THEY WERE PREPARED AND PUBLICATION THEREOF IS EXPRESSLY LIMITED TO SUCH USE. REPRODUCTION, OR PUBLICATION BY ANY METHOD, IN WHOLE OR IN PART, IS PROHIBITED. TITLE TO THE PLANS AND SPECIFICATIONS REMAINS IN THE ENGINEER WITHOUT PREJUDICE. VISUAL CONTACT WITH THESE PLANS AND SPECIFICATIONS SHALL CONSTITUTE PRIMA FACIE EVIDENCE OF THE ACCEPTANCE OF THESE RESTRICTIONS.



SDCB
 GR 286.3
 INV IN 281.8
 INV OUT 290.2



LEGEND			
(N)	NEW	(B3)	TIME SHARE
(E)	EXISTING	---	SD (N) STORM DRAIN
PVC	POLYVINYL CHLORIDE	---	SD (E) STORM DRAIN
(N)	(E)	---	SS (N) SANITARY SEWER
•	BOV	---	SS (E) SANITARY SEWER
○	MH	---	SS (E) SANITARY SEWER TO BE DEMOLISHED
□	CB	---	W (N) WATER
■	WV	---	W (E) WATER
▲	FH	---	W (E) WATER TO BE DEMOLISHED
☆	SL	---	W (E) WATER TO BE DEMOLISHED
•	AD	---	RW RECLAIMED WATER
○		---	

NOTES

8" WATER LINE ALIGNMENT TO BE ADJUSTED BEHIND CATCH BASINS TO ALLOW FOR MCD REQUIREMENTS FOR SEPARATION.

LOT DRAINAGE SHALL BE CONTAINED ON LOT USING STORM WATER DISPERSION DETAIL, SEASIDE S-480.

OWNER WILL RELOCATE EXISTING GOLF COURSE IRRIGATION PRIOR TO CONSTRUCTION AS REQUIRED.

PLAN LOCATION FOR DOMESTIC WATER AND RECLAIMED WATER ARE GRAPHIC ONLY.

NEW WATER MAIN SHALL BE CL 200 PVC PIPE (DR14 PER AWWA C-900-97) SEE MCD STANDARD PLAN W-16

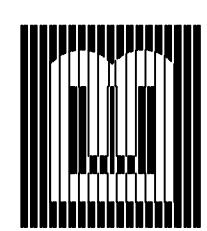
MULTIPLE STRAIGHT PIPE SECTION SHOULD BE USED WHERE NECESSARY TO MAINTAIN THE MINIMUM PIPE SEPARATIONS SHOWN ON THE TYPICAL STREET SECTION DETAIL SHEET C-01 AND IN THE MCD STANDARDS.

PLACE 2X4 PAINTED WHITE @ END OF ALL SEWER STUBS - EXTEND TO 2' ABOVE FINISH GRADE. TAPE BERNTSEN "DEEP 1" MAGNET MARKER TO TOP OF PIPE (INFO 1-800-356-7388) TYPICAL AT ALL PIPE STUBS - OR PER MCD STANDARDS.

DISPOSAL FIELD (ABANDONED)

REVISIONS	
DESIGNED BY	
DRAWN BY	
DATE:	
ENGINEER	
RCE:	
EXP:	

BESTOR ENGINEERS, INC.
 CIVIL ENGINEERING - SURVEYING - LAND PLANNING
 9701 BLUE LARKSPUR LANE, MONTEREY, CALIFORNIA 93940



PREPARED FOR: SEASIDE RESORT
EXHIBIT C
 SEASIDE RESORT HOTEL - STAGE 1
 CITY OF SEASIDE
 CALIFORNIA
 COUNTY OF MONTEREY.

SCALE:	1" = 60'
DATE:	10/17
SHEET:	2 OF 2
WO:	5991.00

PRELIMINARY
 NOT FOR CONSTRUCTION